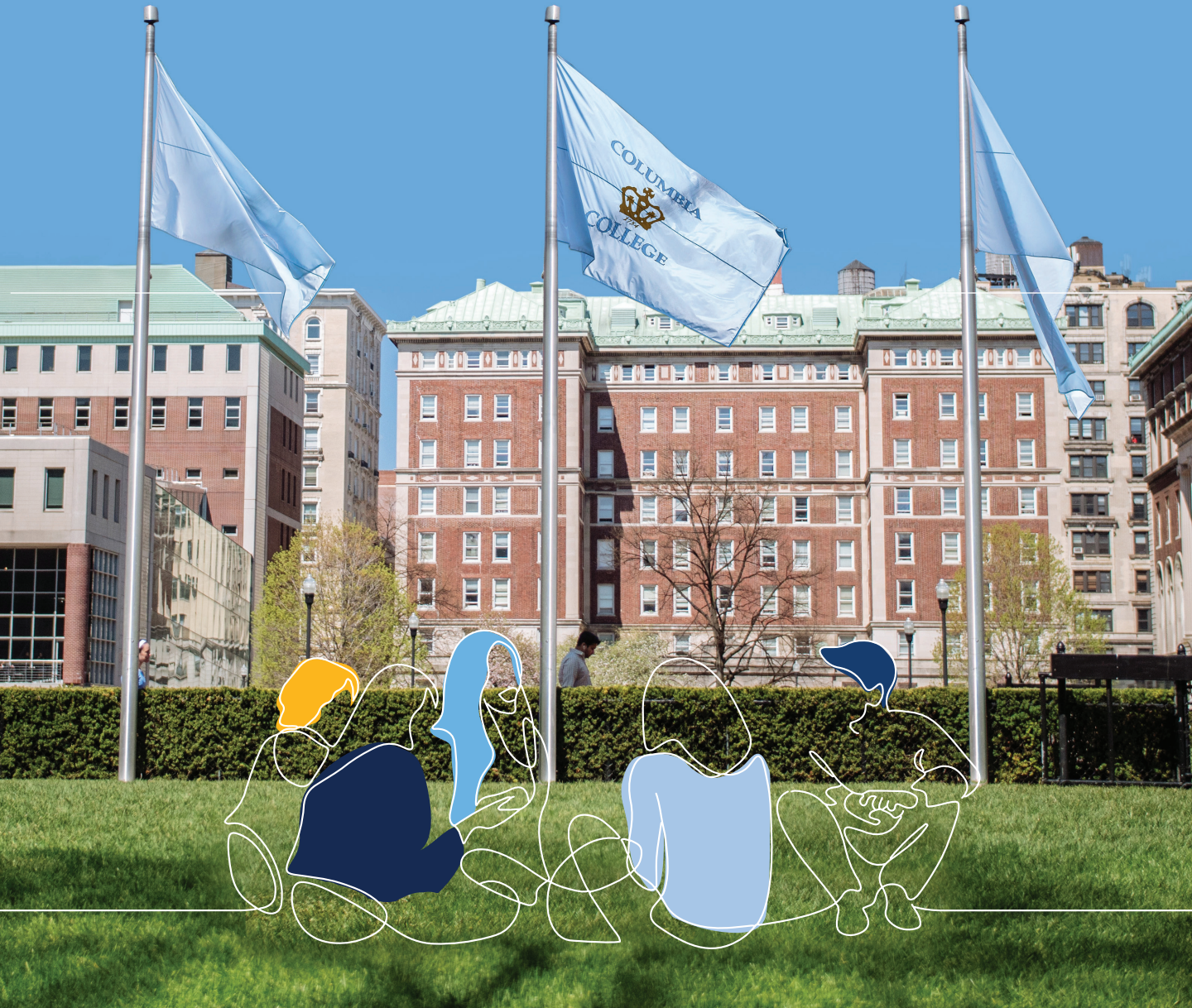




2023-24 ANNUAL REPORT



A MESSAGE FROM OUR CO-CHAIRS

Dear Parent Leadership Council families,

Thank you for your membership in the Parent Leadership Council. **Your support of Columbia College — and investment in the undergraduate experience available to its students — is an inspiration to our parent community.** Your commitment and incredible generosity make a difference in the lives of students each day.

Please enjoy the 2023–24 Parent Leadership Council Annual Report, which highlights many of the successes of the past year. Despite the challenges we all experienced, families like yours contributed to efforts to build community and support the College.

One of the most notable achievements is that the PLC — which grew to include **184 families** — collectively contributed **\$5.7 million** in support for the College during Fiscal Year 2023–24, including **\$3.8 million** for the Columbia College Fund. These funds enable the College to provide need-based financial aid, offer stipends for internships and research opportunities, invest in the Core Curriculum, enhance student life initiatives and so much more.

We are so grateful to you for your support of the College. We have had an opportunity to connect with many of you and look forward to continuing to engage with this remarkable parent community.

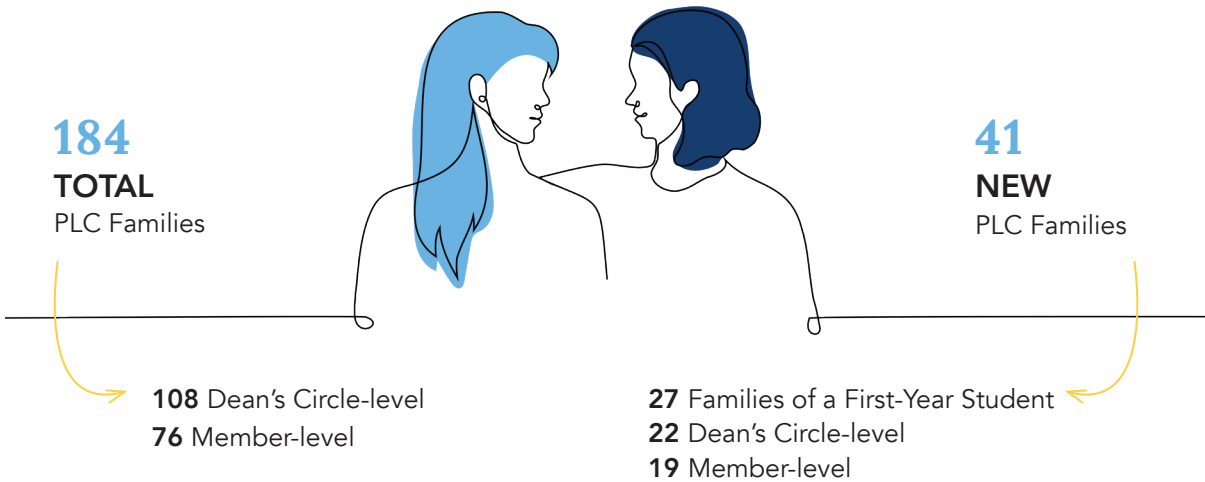
Sincerely,

Estelle Choe and Paul Kim CC'87, P: CC'22, CC'25
Maral and Sarkis Jebejian CC'91, LAW'94, P: CC'26
Co-chairs, Parent Leadership Council



2023-24 MEMBER STATS

Thank you to the members of the Parent Leadership Council! Our new and continuing families provide essential resources to the College, making it a place of growth and exploration for all students.



RESIDING IN

18
STATES &
TERRITORIES

10
COUNTRIES



LEADERS ACROSS THE UNIVERSITY

26
College Walk
Society

23
Alumnae
Legacy Circle

13
Board
of Visitors

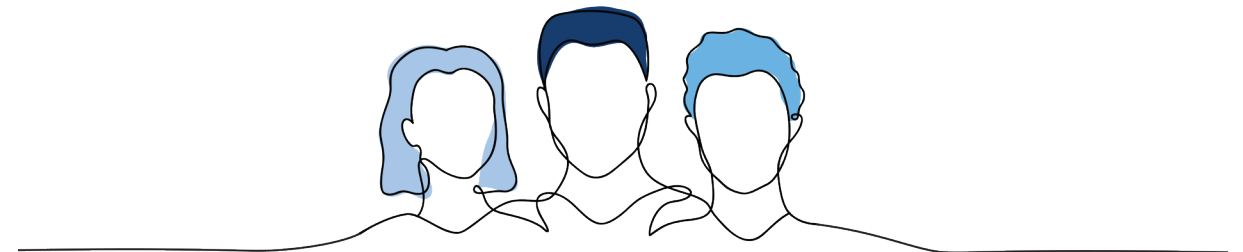
10
Fund Development
Council

9
CCAA Board
of Directors

6
1754 Society

1
CCW Board
of Directors

1
Columbia Board
of Trustees



2023–24 FUNDRAISING TOTALS

Members of the Parent Leadership Council gave **\$3.8 million** to the Columbia College Fund, which provides resources that meet the immediate needs of the school. Some of these contributions are unrestricted and able to be used where they are needed most. Other gifts are specifically designated to financial aid, the Core Curriculum, internships or student life.

Members also contributed **nearly \$1.9 million** to other areas of Columbia College, including endowments. Endowed funds provide Columbia with a reliable source of income in perpetuity. They are invested and the accumulated appreciation and income is used to fund an annual distribution.

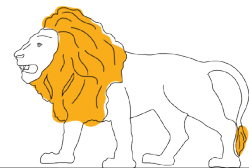
In total, members of the Parent Leadership Council generously gave **\$5.7 million** to Columbia College.

SUPPORT OF COLUMBIA COLLEGE

\$3.8 MILLION
TO THE COLUMBIA
COLLEGE FUND



\$1.9 MILLION
TO OTHER AREAS OF
COLUMBIA COLLEGE



\$5.7 MILLION
TOTAL TO COLUMBIA COLLEGE

2023–24 SUPPORT OF FINANCIAL AID

NAMED SCHOLARSHIPS

Named Scholarships are the cornerstone of Columbia College's financial aid program. They provide a portion of the funding that makes it possible for the College to offer need-based support to students. These scholarships provide critical support to students, enabling them to make the most of their Columbia experience.

During the 2023–24 academic year, **51 Parent Leadership Council families funded 60 current-use and endowed Named Scholarships**. These scholarships provided essential support to 84 students.

COLLEGE WALK SOCIETY

The College Walk Society (CWS) is a leadership giving society for alumni, parents and friends who make a meaningful contribution in support of financial aid at the College. Members are among the most generous financial aid donors. **The College is proud to have more than 150 CWS members, including 26 PLC families.**

Kenneth Hong P: CC'27, and his wife Danya, are dedicated members of the Parent Leadership Council and College Walk Society. Ken and his family live in Wisconsin, where he is the owner of an industrial products wholesale and distribution company. Ken's philanthropy at Columbia is inspired by his father, who had a particular love of education and his grandson, Max CC'27. Ken joined the College Walk Society by establishing the Peide Hong Scholarship, which is named after and dedicated to his father.

Beyond his philanthropy at Columbia, Ken is involved with the Milwaukee Chinese Community Center and other organizations dedicated to the advocacy for Chinese culture, language and social engagement. Ken hopes his commitment as a parent of a first-year Columbia student will inspire other new parents to get involved and make an impact.



2023-24 SPECIAL EVENTS

Throughout the year, members of the Parent Leadership Council are invited to events and programs that enable them to connect with Columbia College and one another.



August 25, 2023
International Families Welcome Reception
 Carleton Commons, Columbia University
Hosts: PLC Co-chairs Emeriti Raymond H. Yu CC'89, SEAS'90, P: CC'21, CC'23, CC'25 and Amy H. Yu TC'07, TC'12,



August 26, 2023
PLC New Parent Welcome Reception
 Faculty House, Columbia University
Hosts: PLC Co-chairs Maral and Sarkis Jebejian CC'91, LAW'94, P: CC'26



October 13, 2023
Fall PLC Meeting
 The Lantern at Lanfest Center of the Arts, Columbia University
Featuring: Dean Josef Sorett and Miguel Urquiola, dean of social science and professor of economics



November 7, 2023
Bay Area Columbia College Parent Reception
 San Francisco, California
Hosts: PLC members Gregg E. and Anna E. Brockway CC'92, P: CC'26



January 11, 2024
Parent and Alumni Reception with Dean Sorett
 The Arts Club, London
Hosts: PLC members Ekta and Munish Varma P: CC'25



March 11, 2024
Parent and Alumni Dinner
 Lei Garden, Hong Kong
Host: PLC member Thomas Chow CC'94, BUS'99, P: CC'24



March 12, 2024
Parent and Alumni Dinner
 HIYA Restaurant, Shanghai
Hosts: PLC members Jack Wang and Echo Ren P: CC'25



March 12, 2024
Parent and Alumni Dinner
 The House of Dynasties, Beijing
Hosts: PLC members Sara Dai and Michael Yao P: CC'25 and Anna Fang CC'04



April 12, 2024
Spring PLC Meeting
 Faculty House, Columbia University
Featuring: Dean Josef Sorett and Nicholas Dames, the Theodore Kahan Professor of Humanities



April 19, 2024
Columbia University Orchestra (CUO) Performance
 Alice Tully Hall at Lincoln Center, New York

A SPECIAL TRIBUTE

Estelle Choe and Paul Kim CC'87, P: CC'22, CC'25 are members of the Columbia College parent community whose dedication to the College has made a lasting impact. Over the past four years, they served as co-chairs of the Parent Leadership Council (PLC), contributing their time, energy and expertise to advance the College's mission.

Throughout this time, Estelle and Paul have exemplified what it means to be engaged advocates, embodying a spirit of partnership and inspiring other parents to follow their lead. They played a crucial role in bringing parents together and strengthening community ties by hosting happy hours, as well as countless virtual events during the pandemic. **Their involvement has been characterized by a commitment to supporting the work of the College, building a network for fellow parents, and fostering a welcoming environment for all Columbia families.**

Paul was a recipient of financial aid as a student at the College, and he and Estelle are deeply committed to supporting financial aid. They recognize the importance and value of the need-blind admissions policy.

Estelle and Paul deepened their commitment to the College in 2019 when they **joined the PLC, as well as the 1754 Society and the Centennial Circle**, shortly after their first daughter began her journey at the College. As 1754 Society members, they designated future support for the Columbia College Fund and financial aid to ensure that future generations will continue to benefit from the exceptional education that Columbia provides. Their leadership contributions as Centennial Circle members play a vital role in strengthening the Core Curriculum for students of today and the next century. The generosity of Centennial Circle members is commemorated with a plaque in Hamilton Hall, a tribute to their impact on the College.

As they transition into their new roles as co-chairs emeriti, Estelle and Paul continue to inspire future generations of leaders within the PLC. Their story is one of **dedication, generosity and a vision for a vibrant Columbia community** with a legacy that will enhance the student experience at the College for years to come.

Paul and Estelle, October 2020



2023-24 PARENT LEADERSHIP COUNCIL

Columbia College is proud to recognize the 184 families who are members of the Parent Leadership Council. Thank you for your support of the College and commitment to enhancing the undergraduate experience of every student.

CO-CHAIRS

Estelle Choe and Paul Kim CC'87, P: CC'22, CC'25
Maral and Sarkis Jebejian CC'91, LAW'94, P: CC'26

CO-CHAIRS EMERITI

Robyn L. Field and Anthony D. O'Carroll P: CC'21, CC'23
Raymond H. Yu CC'89, SEAS'90, P: CC'21, CC'23, CC'25 and Amy H. Yu TC'07, TC'12, P: CC'21, CC'23, CC'25

DEAN'S CIRCLE

Elizabeth Albert and Howard M. Kleinman CC'84, P: CC'18, CC'23
Samara Bernot Meshel CC'92, P: CC'18, CC'23 and Adam R. Meshel CC'92, LAW'95, P: CC'18, CC'23
Sumita Bhattacharya BUS'95, P: CC'25 and Monish Kumar SIPA'95, P: CC'25
Brian C. Birtwistle and Julie D. Bornstein P: CC'26
Gregg E. and Anna E. Brockway CC'92, P: CC'26
Shari R. and Gary A. Brooks P: CC'24, CC'26
Janine Brown and Alexander J. Simmons Jr. P: CC'22
Lisa L. Carnoy CC'89, P: CC'26 and David A. Carnoy SOA'92, P: CC'26
Liru Z. and James C. Chang P: CC'26
Yubing Cheng and Guifang He P: CC'26
Nancy Chung and David K. Park GSAS'98, GSAS'04 P: CC'27
Rona L. and Ben Cosgrove CC'90, P: CC'22, CC'27
Monique L. Cusson and Constantine M. Dakolias SEAS'89, P: CC'23
Christian Dahlberg and Jennifer Anglade Dahlberg CC'93, P: CC'23
Yu Dang and Ming Weng P: CC'25
Anne Marie Darling P: CC'25

Daniela and Richard N. de los Reyes CC'97, P: CC'27
Jeff A. Fuisz and Lexi S. Diamond CC'91, P: CC'26
Grace and James H. Dignan CC'91, P: CC'26
Kimberly and Amit Dixit P: CC'27
Joslyn and Sean Dobson P: CC'27
Yongbo Du and Ying Huang P: CC'24
Marcia Dunn and Jonathan S. Sobel SEAS'85, CC'88, P: CC'27
Sabine Endrigkeit and Klaus Mergener P: CC'24
Tracy and Mark Evans P: CC'27
Min Fan and Xinzhi Zhang P: CC'24
Jodie K. and Andrew A. Fink CC'91, LAW'94, P: CC'24, CC'27
Julie Ge and Kequan Liu P: CC'24
Bradley J. and Michelle J. Goldberg CC'91, P: CC'25
Eric S. Goldstein CC'80, P: CC'15, CC'18, CC'25 and Tamar B. Goldstein BC'87, P: CC'15, CC'18, CC'25
Kimberley Hatchett and Tracy V. Maitland CC'82, P: CC'24, CC'27
Danya Han and Kenneth Hong P: CC'27
Kun He and Hai Jun Xia P: CC'26
Roberto Hoornweg and Katleen E. Van Roost P: CC'26
Melonee A. and Russell C. Horowitz CC'88, P: CC'26
Shuang Hou and Shengang Yuan P: CC'24, CC'27
Wen-Lian C. Hu and Wei-Dong Jin BUS'98, P: CC'26
Shu-Chen Huang and Stanley S. Ko BUS'99, P: CC'23, CC'25
Yong Huang and Yang Xu P: CC'26
George Jiang and Hua Tang P: CC'19
Michael G. Kaiser and Michelle Estilo Kaiser CC'87, PH'92, VPS'97, P: CC'20, CC'25

Robyn A. Kampf and John V. Vincenti CC'90, P: CC'26
Nancy and Kobi Karp P: CC'25
Fay Kastrinos CC'95, P: CC'27 and John Mark Poneris CC'91, VPS'95, P: CC'27
David S. and Karie Katz P: CC'25
Kristine Kennedy CC'91, LAW'94, P: CC'24, CC'25
Christine L. Ku and Arthur D. Kim CC'95, P: CC'23
Borah and Sang Kim CC'92, P: CC'25, CC'26
Robin-Hwajin Y. Kim P: CC'23
Sungwan Kim and Hosun Yoon P: CC'23
Omar Kodmani CC'89, P: CC'23, CC'26 and Lina Kodmani BC'94, P: CC'23, CC'26
Carolyn U. and Joshua M. Kraft P: CC'22
Patricia L. Labrada CC'91, P: CC'23 and Michael A. Camacho CC'91, P: CC'23
Grace and Nicholas P. Leone CC'88, P: CC'19, CC'22, CC'24
Jian Li and Zhifeng Yang P: CC'23
Karen A. Mahoney CC'88, P: CC'19, CC'27 and Dennis T. Mahoney SEAS'88, SEAS'96, P: CC'19, CC'27
John Manning and Yahphen Y. Chang CC'87, P: CC'24
Victoria F. and James C. Maroulis CC'88, P: CC'21, CC'26
Jae Myoung and Daniel H. Lee P: CC'26
Syed Ali R. Naqvi and Amna Tirmizi Naqvi P: CC'21, CC'23
Ann and Francis Neczypor P: CC'08
Samir and Rupal Parekh P: CC'27
Jenny and Tai H. Park CC'83, P: CC'25
Abigail Pollak P: CC'27
Zhengzhe Qu and Haiyan Zeng P: CC'26
Rini Banerjee Ratan P: CC'26, CC'28
Jie Ren and Jian Wang P: CC'25
David I. Robbins and Joyce Chang CC'86, P: CC'24
Shyanne and Kurt W. Roeloffs Jr. CC'84, P: CC'25
Jaye T. and John A. Rogovin CC'83, P: CC'23, CC'25
Eun Jung Roh and Keun Chang Yoon P: CC'26
Corinne and Robert P. Rooney SEAS'87, CC'89, P: CC'23

Elizabeth A. and Seth D. Rosen BUS'98, P: CC'21
James A. Rothman and Stefanie F. Katz-Rothman CC'88, P: CC'26
Barbara M. and Michael S. Satow CC'88, P: CC'21, CC'26
Lisa Beth F. and Adam J. Savitz P: CC'23
Margaret Sung and Michael J. Schmidtberger CC'82, LAW'85, P: CC'24
Ted U. Schweitzer CC'91, LAW'94, P: CC'24
Sobia A. and Nadir Shaikh P: CC'23, CC'26
James Shan and Sophia Cheng P: CC'27
Jill A. and Mark Shinderman P: CC'25
Catherine J. and Thomas J. Strong P: CC'24
Sabine and Brian J. Thomson CC'89, P: CC'27
Angela Tu TC'92, P: CC'27 and Gregory E. Ostling CC'91, TC'92, LAW'98, P: CC'27
Chiu F. Tung P: CC'25
Thomas L. and Mila H. Tuttle CC'96, SIPA'05, P: CC'26
Ekta and Munish R. Varma P: CC'25
Harjeet K. and Manmeet Viridi P: CC'24
Sandy Wang CC'92, P: CC'24 and Christopher J. McGowan CC'92, P: CC'24
Deborah W. and Jacob N. Wohlstadter P: CC'25, CC'26
Sherri P. Wolf CC'90, P: CC'21, CC'24 and Douglas R. Wolf CC'88, P: CC'21, CC'24
Mei Xue and Weifang Zhou P: CC'24
Beth L. and Scott R. Yagoda CC'86, LAW'92, P: CC'20, CC'25
Jinbo Yao and Keiyang Dai P: CC'25
10 Anonymous

MEMBERS

Suzanne Abele-Ebanks and Kenneth D. Ebanks P: CC'27
Joseph Andreano and Maria L. Deknatel P: CC'25
Gael and Emile Bacha P: CC'16, CC'20, CC'22
Dayna Bandman and Andrew A. Schmeltz CC'93, P: CC'24
Holly A. and Albert Baril P: CC'25

Gail and Joseph Barry P: CC'87, CC'89, CC'17, CC'21
Erica L. Benton CC'97, P: CC'27 and Timothy M. Benton CC'97, P: CC'27
Lauren D. and Keith M. Breslauer P: CC'21, CC'23
Patricia Brett CC'87, P: CC'18, CC'21, CC'26 and James Brett CC'84, BUS'90, P: CC'18, CC'21, CC'26
Alice Chen and Yanan Wang P: CC'21, CC'24
Myra and Edward Chen P: CC'22, CC'26
Kathy and Thomas Chong SEAS'92, P: CC'26
Thomas Chow CC'94, BUS'99, P: CC'24
Karl A. Cole-Frieman CC'92, LAW'97, P: CC'25 and Wanda Cole-Frieman BC'94, P: CC'25
Kara S. and Dean C. Conomikes P: CC'22
Mark and Lara Wong Dao CC'95, P: CC'27
Emmanuel DeSousa and Anastasia Zaandam P: CC'26
Frances M. and Patrick J. DeSouza CC'80, P: CC'20, CC'23
Deborah and Scott P. DeVries P: CC'22
Hua Ding and George Wu P: CC'25
Martin J. Erzinger
Gabriella Espinosa and Teodoro Moscoso P: CC'25, CC'27
Lance S. and Leslie N. Estrada CC'94, P: CC'26
Andrea Everett and Jaime Mercado SEAS'87, CC'89, P: CC'26
Michael Fu and Shirley Ying P: CC'23, CC'26
Deborah Gahr and Roy W. Pomerantz CC'83, P: CC'26
Ali Gulcelik and Selin Gülçelik P: CC'25
Maria del Carmen Hinojosa and Sean Hecker CC'92, P: CC'27
Hongtao T. Hou and Sophie X. Wang P: CC'25
Karin Schmidt Hoverman LAW'01, P: CC'27 and Daniel Stephens Hoverman BUS'03, LAW'03, P: CC'27
William K. Hui and Jing Zhao P: CC'18, CC'24
Brett Humphreys and Samantha J. Merton BUS'95, GSAS'00, P: CC'23

Vartika Jain and Yoginder K. Yadav P: CC'26
Irene and Richard Kim P: CC'27
Nina E. Kottler and Evan A. Malter CC'96, P: CC'26
Yongchun Lang and Ping Wu P: CC'23
Feng Lin and Dan Li P: CC'27
Xia Lin and Hong Bo Qi P: CC'24
Claudia E. and Raymund J. Llaurado P: CC'23
Anita Wai Man Ma BUS'99, P: CC'27 and William H. Tang BUS'98, P: CC'27
Ellen V. and Matthew P. Masseur P: CC'23
Lia A. Mehos and Joseph G. Del Toro CC'93
Ritu Metzger CC'94, P: CC'26 and Alex S. Metzger CC'94, P: CC'26
Pooja and Rahul Munjal P: CC'27
Michaela and Matthew J. Nelson CC'86, P: CC'24
Lidong Ni and Angel Zheng P: CC'25
Kimberly and Paul O'Connor III P: CC'25, GS'26
Jodi L. Oh CC'88, P: CC'27 and Tony Oh SEAS'86, P: CC'27
John E. O'Toole Jr. and Kristin L. Walter P: CC'25
Carol and Souren G. Ouzounian CC'89, P: CC'27
Naxin J. Paik SEAS'91, SEAS'96, P: CC'24 and Edward Y. Paik SEAS'91, SEAS'95, BUS'96, P: CC'24
Juliet C. Park CC'93, PS'99, P: CC'25 and Jamie A. Cesaretti CC'93, P: CC'25
Hua Qiao and Haitao Zhai SIPA'00, P: CC'25
Shirley L. Qiu SEAS'94, P: CC'26 and Yang D. Shao GS'93, P: CC'26
Louise R. Radin and Leonard Kreynin CC'86, GSAS'88, LAW'90, P: CC'25
Robin K. Reingold and Jonathan Susman CC'87, P: CC'26, CC'27
Linda V. and Vincent R. Saladini CC'80, PS'84, P: CC'25
Tina V. and Karim Samii CC'85, P: CC'26
David M. Shavelle and Isla P. Garraway P: CC'24, CC'27
Celine P. and Dan Shimizu P: CC'25
Cathy Shu and Edmond C. Ng SEAS'96, P: CC'23, CC'26

Sharon E. Silver LAW'95, P: CC'25 and LeRoy Elazar Rabbani PS'84, P: CC'25
Cathryn E. and Matthew J. Sodl CC'88, P: CC'26
Maria and George L. Staphos BUS'92, P: CC'22, CC'25
Regine E. and James C. Stone CC'90, BUS'96, P: CC'25
Jennifer C. and Douglas S. Teasdale CC'89, P: CC'26
Matthew E. Tropp and Julie A. Levy CC'91, P: CC'21, CC'25
Stacey V. and Nicholas Tsapatsaris P: CC'22
Priscilla and Douglas Walter P: CC'25
Jennifer Wei and Andrew P. Bell LAW'92, P: CC'26
Jenny C. and Liren Wei P: CC'23
Qun Lu and Meijuan Wu P: CC'24
4 Anonymous



COLUMBIA COLLEGE
PARENT
LEADERSHIP
COUNCIL

COLUMBIA COLLEGE
PARENT LEADERSHIP COUNCIL

college.columbia.edu/parents/plc

kd2765@columbia.edu | 212-851-7812